

VRU – 60HP TAMROTOR E-25 SCREW COMPRESSOR

Capacity up to 15 e³m³/day of Sweet Gas at 2-12 oz Tank Pressure

PRODUCT BULLETIN

PRODUCT CAPACITY

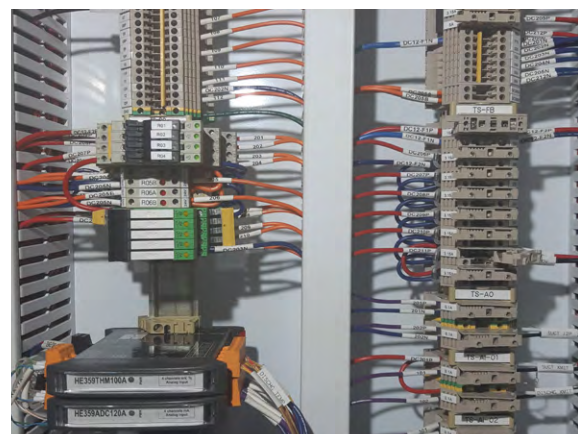
- Inlet/suction pressures 0psig to 15psig
- Discharge Pressures from 70psig to 250psig
- Flow Rates up to 15 e³m³/day from 0psig inlet pressures
- Sweet Gas Service

APPLICATION

Sweet Gas VRU Compressor, used for controlling and recovering vent gasses off multiple tank storage facilities such as an oil battery or single well facilities. This 60HP Unit has a wide automated speed range when set-up with the VFD option. The large oil capacity and coalescer filter in the lube oil separator c/w 200F thermostatic mixer in the oil loop will help reduce oil dilution and oil carryover in richer gas applications.

FEATURES

- Tamrotor E25 Screw Compressor c/w Gear Box
- 60HP Teco Westinghouse Motor, 1800RPM 480 volt, 3phase, 60hz
- 8' x 14' Skidded Building
- 10KW Electric Heater
- 12" x 48" Inlet Scrubber c/w 3" CL150 Flanged Inlet & Outlet
- 20"dia x 60" Lube Oil Separator (extra oil capacity)
- GHT 975 Two Section Oil/Gas Cooler c/w 2HP 1800RPM Motor, 200F Thermostatic Element on oil system to minimize liquid drop out in oil system
- Automated Louvers control over cooler section c/w warm air recirculating louvers inside building
- Horner HMI Control Panel c/w fully adjustable setpoints for suction pressure recycle control and compressor speed control (Class 1 Div 2)
- Thermocouple Temperature Sensors, Rosemount (Inlet) And Wika (Discharge) Pressure transmitters for accurate readings and shutdowns (all fully adjustable with the HMI)
- 2" Fisher D4 Recycle control valve c/w Fisher I2P Controller
- Surflo Back Pressure Controller



VRU – 60HP TAMROTOR E-25 SCREW COMPRESSOR

PRODUCT BULLETIN

OPTIONS

- Automatic Blow Down
- Fire & LEL Detection
- VFD Control Panel

Inlet Pressure	Discharge Pressure				
	100 PSig	125 PSig	150 PSig	200 PSig	250 PSig
0 PSig	14.4 (e ³ m ³ /d)	13.5 (e ³ m ³ /d)	12.0 (e ³ m ³ /d)	9.7 (e ³ m ³ /d)	N/A
5 PSig	18.1 (e ³ m ³ /d)	17.0 (e ³ m ³ /d)	15.6 (e ³ m ³ /d)	13.1 (e ³ m ³ /d)	11.1 (e ³ m ³ /d)
10 PSig	22.1 (e ³ m ³ /d)	19.0 (e ³ m ³ /d)	18.1 (e ³ m ³ /d)	15.6 (e ³ m ³ /d)	13.7 (e ³ m ³ /d)
20 PSig	27.5 (e ³ m ³ /d)	25.0 (e ³ m ³ /d)	22.5 (e ³ m ³ /d)	19.3 (e ³ m ³ /d)	17.0 (e ³ m ³ /d)
30 PSig	34.3 (e ³ m ³ /d)	32.7 (e ³ m ³ /d)	28.2 (e ³ m ³ /d)	23.1 (e ³ m ³ /d)	19.4 (e ³ m ³ /d)
40 PSig	N/A	38.5 (e ³ m ³ /d)	34.3 (e ³ m ³ /d)	26.1 (e ³ m ³ /d)	22.7 (e ³ m ³ /d)
50 PSig	N/A	41.9 (e ³ m ³ /d)	40.6 (e ³ m ³ /d)	31.2 (e ³ m ³ /d)	25.7 (e ³ m ³ /d)

